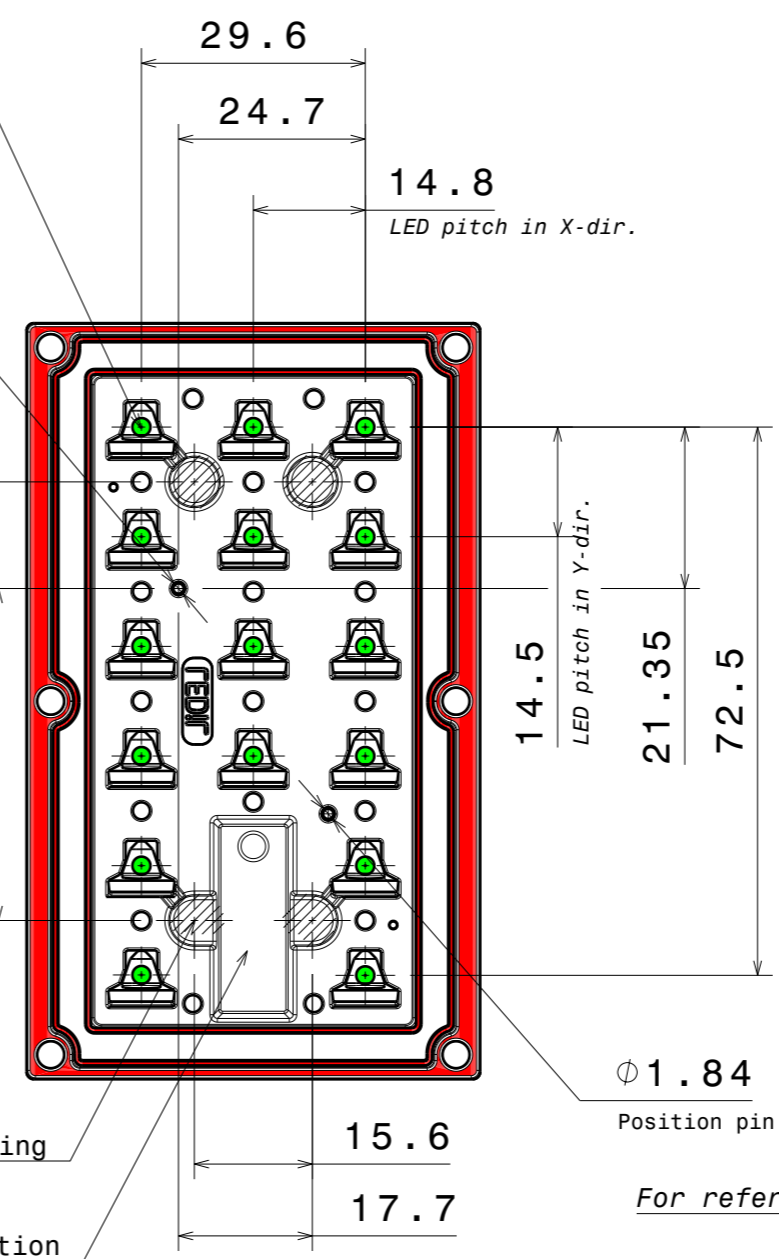


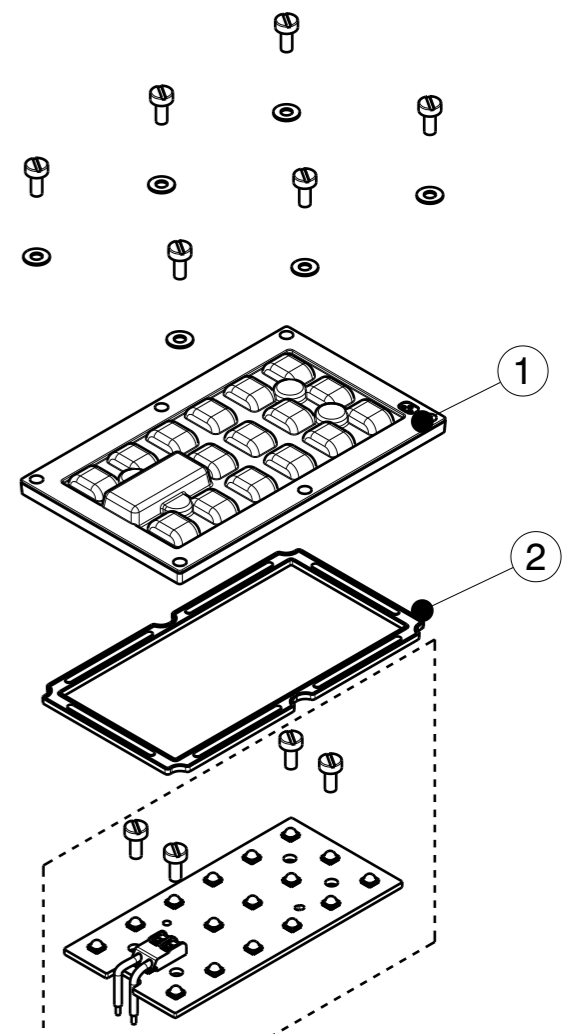
Beam direction

LED positions
colored areas



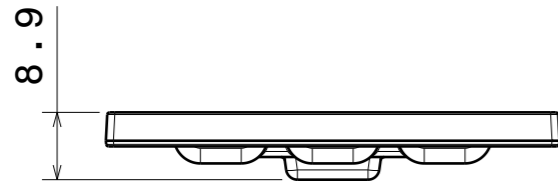
Position for PCB fixing
hatched areas

Compartment for electrical connection



GENERAL MOULDING TOLERANCES

| Dimension [mm] | PMMA / PC |
|----------------|-----------|
| >0-6 | ± 0.2 |
| >6-22 | ± 0.25 |
| >22-40 | ± 0.30 |
| >40-90 | ± 0.44 |
| >90-160 | ± 0.60 |
| >160-200 | ± 0.70 |
| >200-315 | ± 1.1 |
| >315 | ± 1.3 |



| INDEX | PART NO | DESCRIPTION | MATERIAL | COLOUR |
|-------|---------|-----------------------|----------|--------|
| 1 | C16164 | STRADELLA-IP-16-T2-PC | PC | clear |
| 2 | C16161 | STRADELLA-16-SEAL | Silicone | white |

MECHANICAL DRAWING

PRODUCT
CP16165_STRADELLA-IP-16-T2-PC

Plastic molding general tolerances are based on DIN 16901-130 and applies if not otherwise shown in drawing. Silicone molding general tolerances are based on ISO 3302-1 Class M3 and applies if not otherwise shown in the drawing.

FIRST ANGLE PROJECTION:

SCALE 1:1 WEIGHT -

LEDiL®

This drawing is the property of LEDiL Oy. It may not be reproduced, copied or communicated without a written agreement with LEDiL Oy.

A3 SHEET 1/1

Notes

- PCB or heatsink level.
- LED location.
- Ensure LED fitting from a product specific 3D model available from www.ledil.com.

