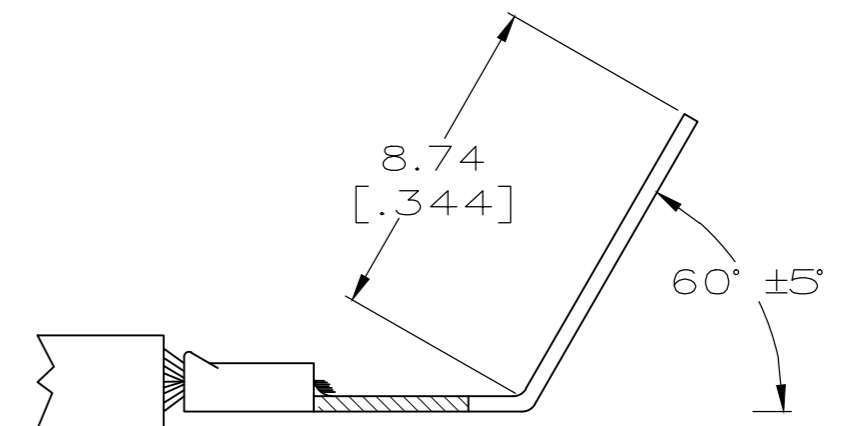
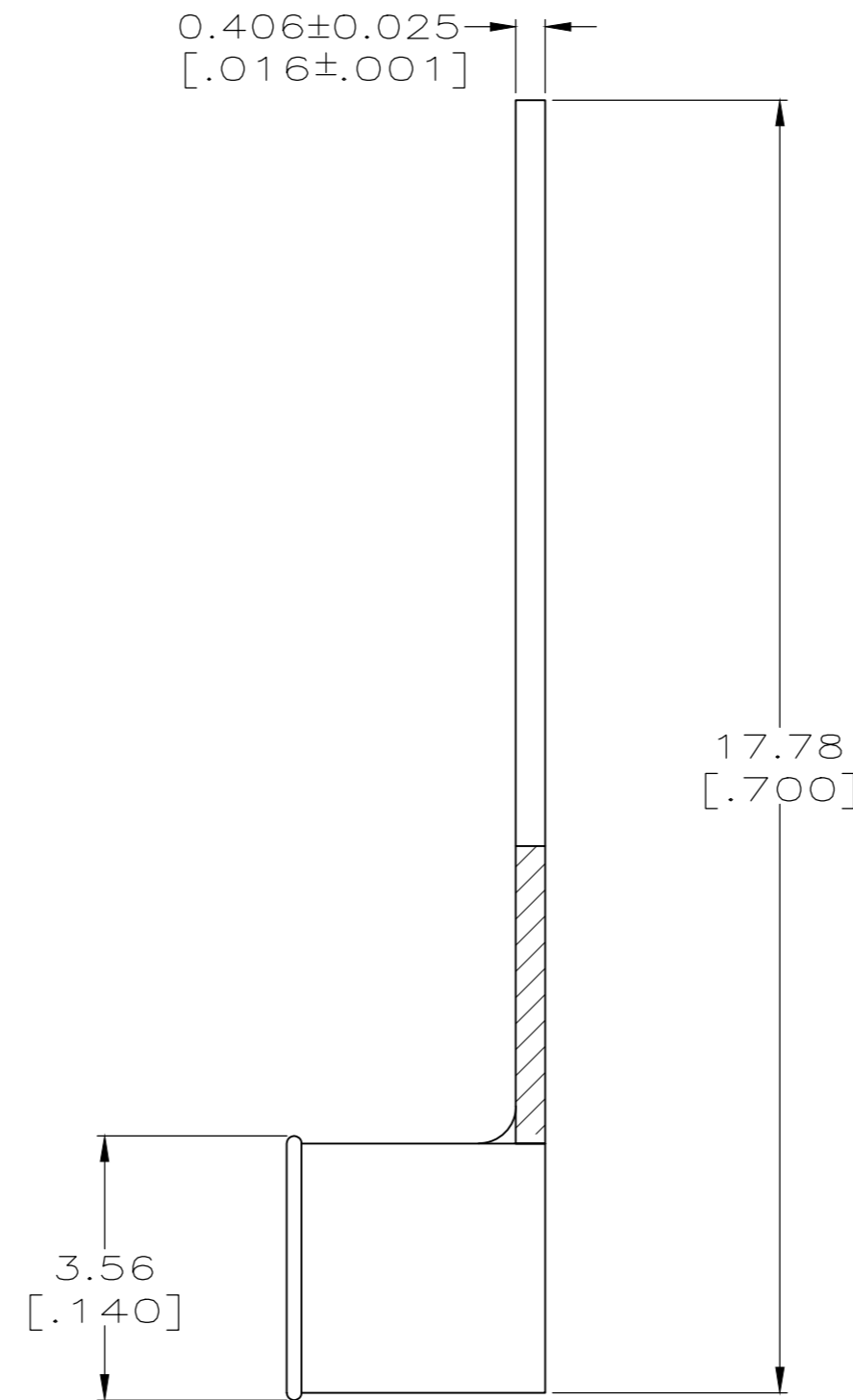
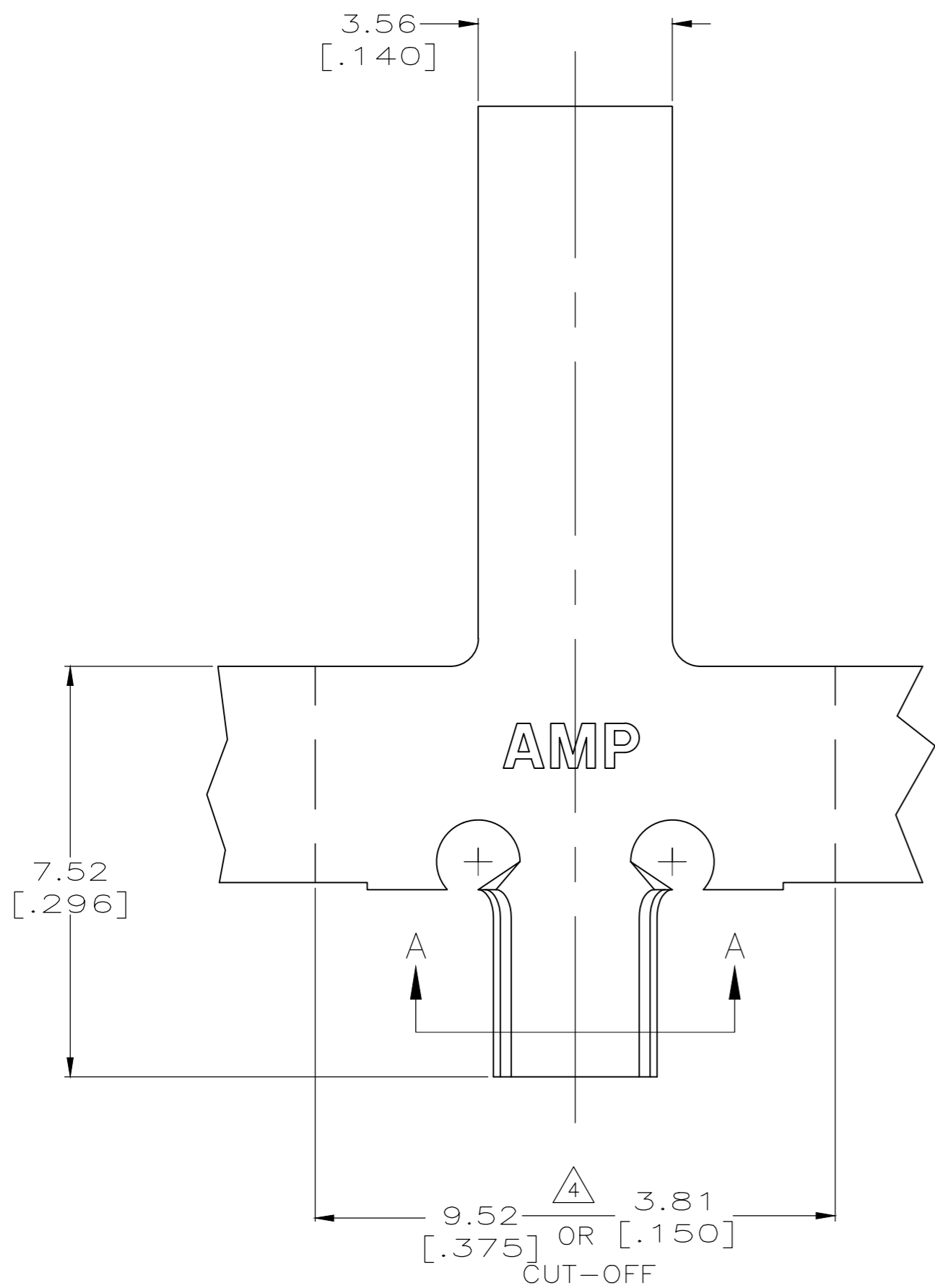


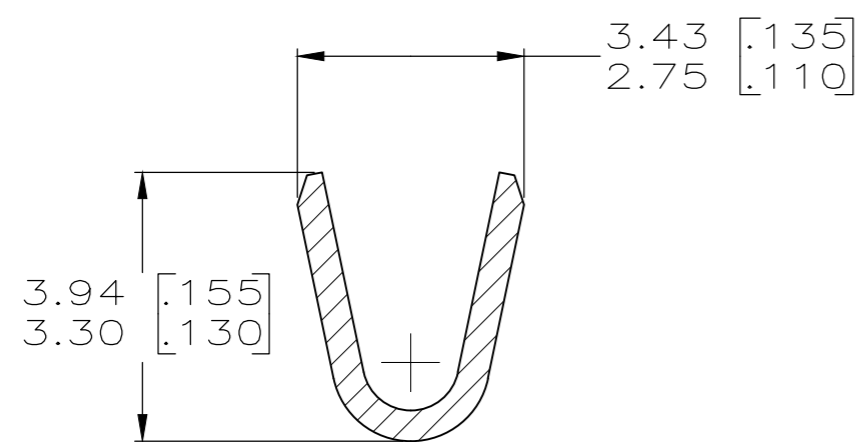
THIS DRAWING IS UNPUBLISHED. RELEASED FOR PUBLICATION
 © COPYRIGHT - By - ALL RIGHTS RESERVED.

REVISIONS				
P	LTR	DESCRIPTION	DATE	APVD
B2		REVISED PER ECR-16-014022	06OCT2016	BW RS

- 1 CONTINUOUS STRIP ON REELS WITH TERMINALS LOCATED ON 11.13±0.13[.438±.005] CENTERS.
- 2 SUFFIX LETTER MUST BE USED ONLY WHEN ORDERING APPLICATOR TOOLING.
- 3 APPLICATOR TOOLING PRESENTLY AVAILABLE FOR BENT VERSION ONLY.
- 4 CONTACT WIDTH MUST BE SPECIFIED WHEN ORDERING APPLICATOR.
- 5 0.002032[.000080] MIN TIN PLATE.



CRIMPED VIEW
 TERMINAL TO BE BENT IN APPLICATOR
 SCALE 5:1



SECTION A-A

OBSOLETE	5	42349-2 H	#18-#14 OR (2) #18	42349-2
NONE	2	42349-1 H	#18-#14 OR (2) #18	42349-1
FINISH		TERMINAL NUMBER BENT	WIRE RANGE	PART NUMBER
THIS DRAWING IS A CONTROLLED DOCUMENT.		DWN SCOTT URICH 12AUG98		
DIMENSIONS: mm [INCHES]		CHK MICHAEL S. FEHER 22SEP98		
TOLERANCES UNLESS OTHERWISE SPECIFIED:		APVD DON DECKER 23SEP98		
0 PLC ± - 1 PLC ± - 2 PLC ± - 3 PLC ± 0.25[.010] 4 PLC ± - ANGLES ± -		NAME CONTACT, LAMP		
MATERIAL 4M BRASS	FINISH SEE TABLE	PRODUCT SPEC -	APPLICATION SPEC -	SIZE A2
		WEIGHT 0	CAGE CODE 00779	DRAWING NO C=42349
		CUSTOMER DRAWING	SCALE 10:1	SHEET 1 of 1
			REV B2	