

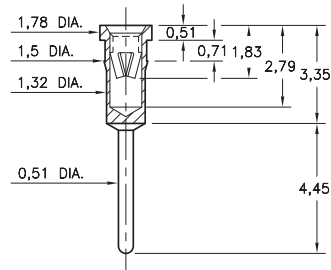
PIN RECEPTACLES

FOR 0,38 - 0,56 DIAMETER PINS

9900

9900-0-15-XX-22-XX-04-0

Press-fit in 1,42 mounting hole



SPECIFICATIONS:

Shell Material: Brass Alloy 360, 1/2 Hard

Contact Material: Beryllium Copper Alloy 172, HT

Dimensions: Millimeters

Tolerances On: Lengths: $\pm 0,13$

Diameters: $\pm 0,051$

Angles: $\pm 2^\circ$



ORDER CODE: XXXX - X - XX - XX - 22 - XX - 10 - 0

BASIC PART #

SPECIFY SHELL FINISH:

01 5,08 μ m TIN/LEAD OVER NICKEL

◆ 80 5,08 μ m TIN OVER NICKEL (RoHS)

◆ 15 0,25 μ m GOLD OVER NICKEL (RoHS)

SPECIFY CONTACT FINISH:

02 2,54 μ m TIN/LEAD OVER NICKEL

◆ 84 2,54 μ m TIN OVER NICKEL (RoHS)

◆ 27 0,76 μ m GOLD OVER NICKEL (RoHS)

SELECT CONTACT:

#22 CONTACT (DATA ON PAGE 252)

(For alternate contact choices, see group B on page 248)