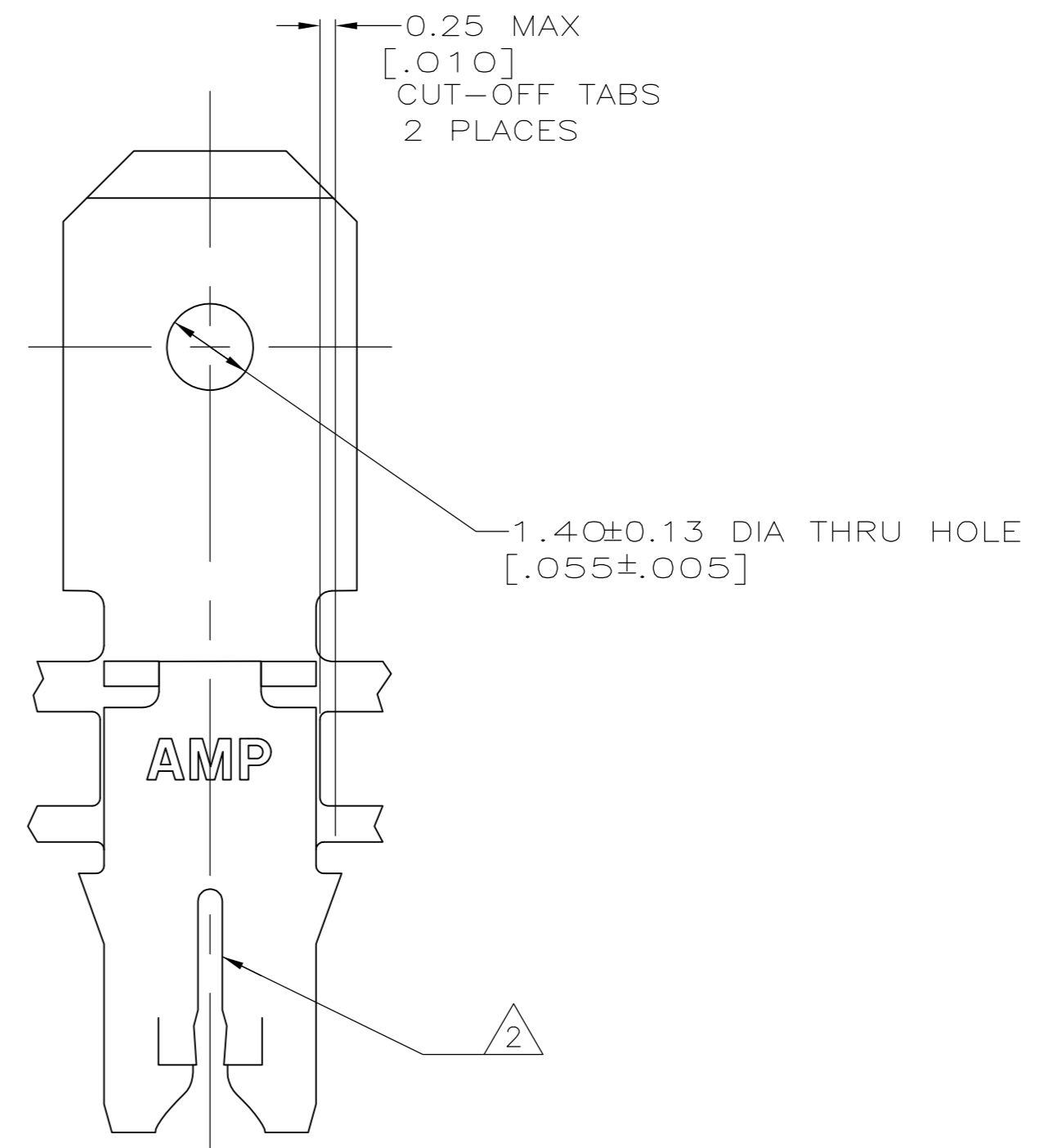
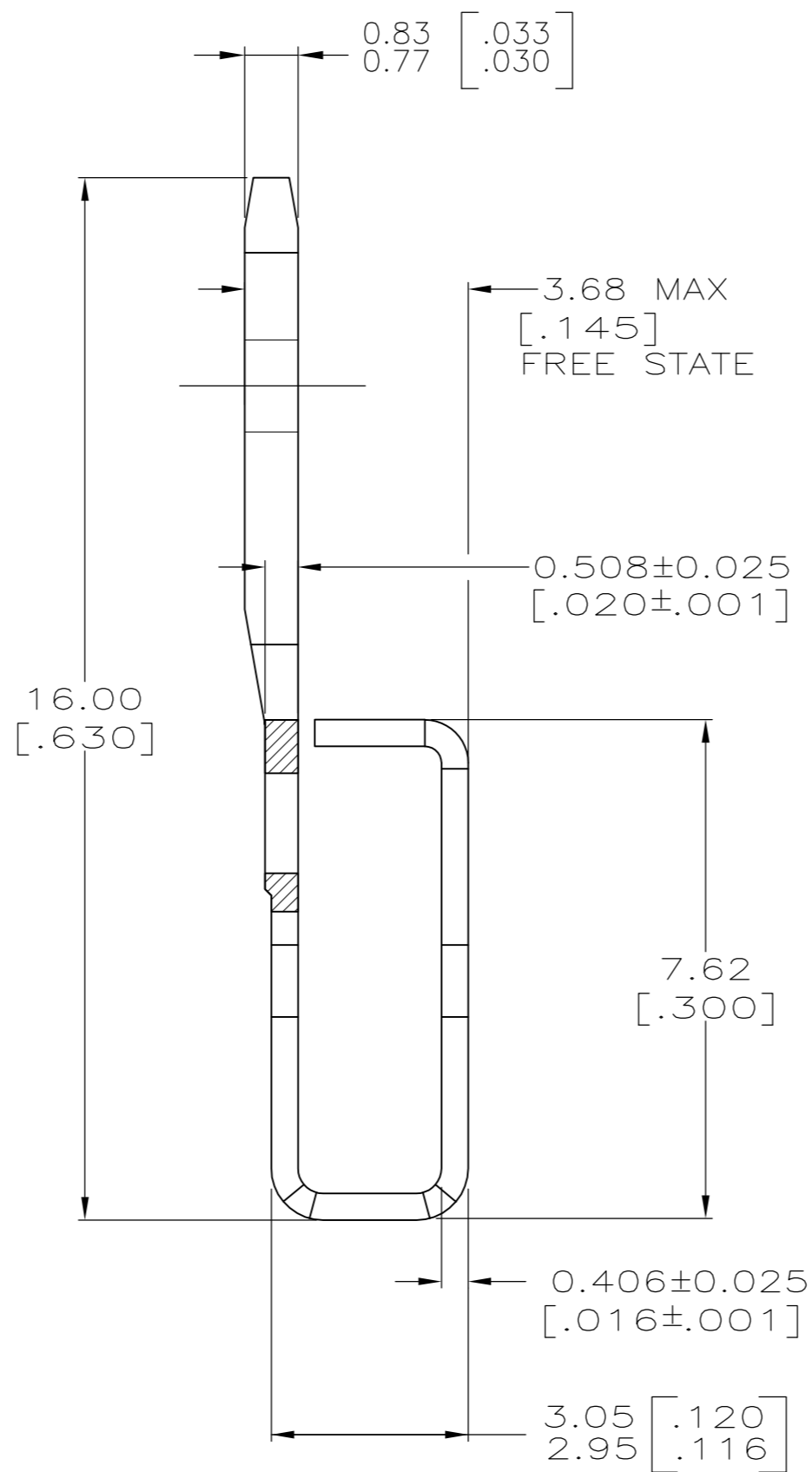
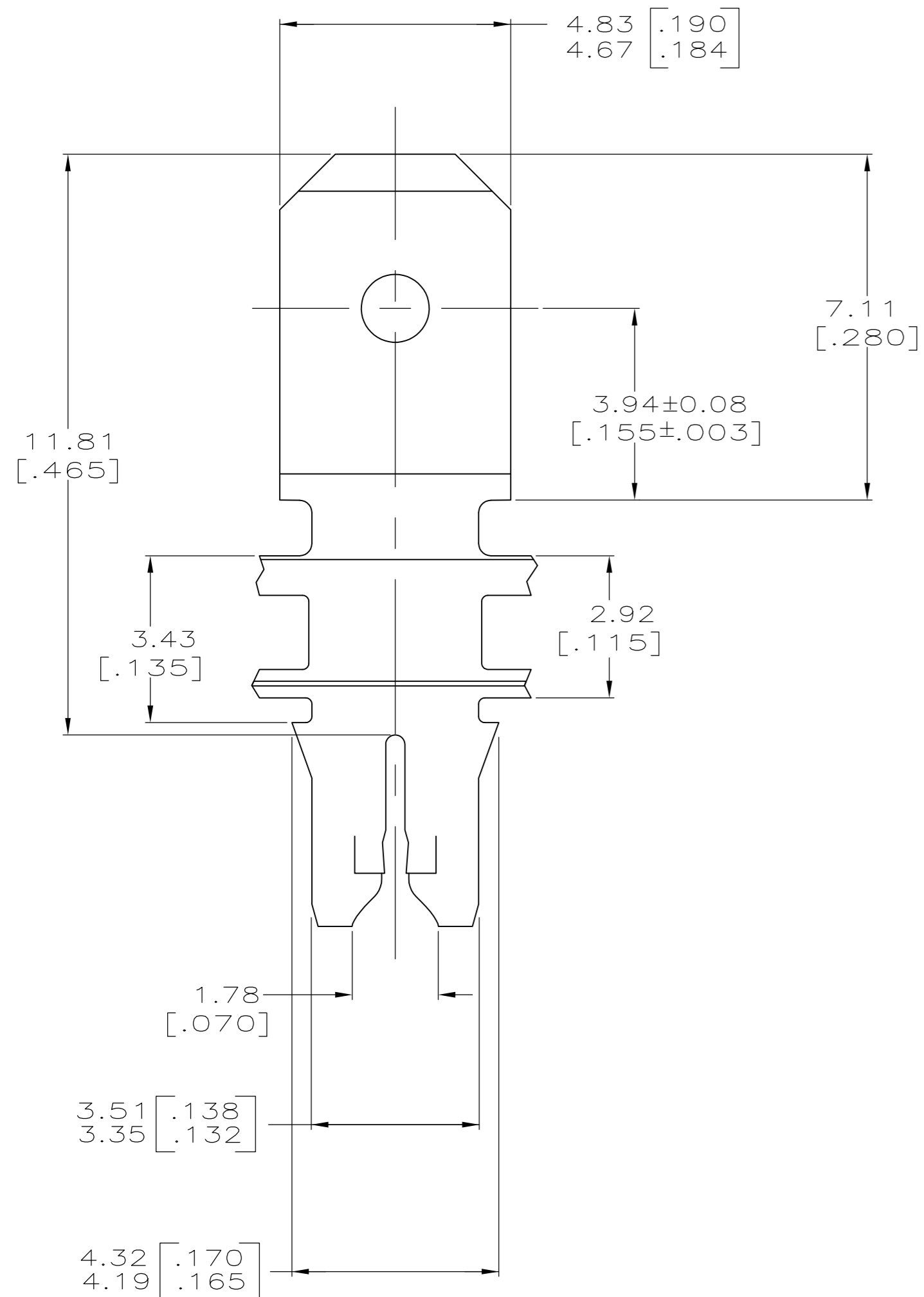
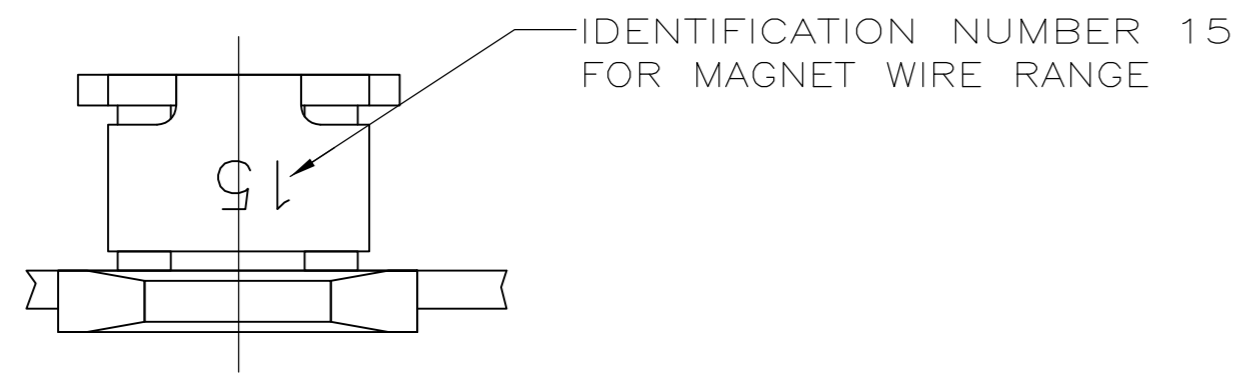


THIS DRAWING IS UNPUBLISHED. RELEASED FOR PUBLICATION
 © COPYRIGHT - By - ALL RIGHTS RESERVED.

LOC	DIST	REVISIONS			
P	LTR	DESCRIPTION	DATE	DWN	APVD
AF	50	C2	ECR-15-005665	10AUG2015	BDA PKS

- 1 CONTINUOUS STRIP ON REELS WITH TERMINALS LOCATED ON 5.59±0.08 [.220±.003] CENTERS.
- 2 SLOT ACCEPTS A SINGLE WIRE MAX OF 0.64-0.81mm [#22-#20] AWG COPPER MAGNET WIRE. SLOT ACCEPTS A SINGLE WIRE MAX OF 0.72-0.91mm [#21-#19] AWG ALUMINUM MAGNET WIRE. ALUMINUM WIRE RANGE APPLIES FOR POST-TIN PLATED VERSIONS ONLY.
- 3 AFTER INSERTION INTO PLASTIC HOLDER TAB PORTION MUST BE BENT OVER 45° TO 90° OR POTTED-IN TO PREVENT PULL-OUT WHEN MATING RECEPTACLE IS DISCONNECTED.



1217128-1
PART NUMBER

THIS DRAWING IS A CONTROLLED DOCUMENT.		DWN MICHAEL S. FEHER 23NOV1998			
DIMENSIONS: mm [INCHES]		CHK PHILLIP M. FORTNEY 23NOV1998			
TOLERANCES UNLESS OTHERWISE SPECIFIED:		APVD PETE DESANTIS 23NOV1998	NAME TAB, 4.75[.187] FASTON™ 300 SERIES MAG-MATE™		
0 PLC ± -		PRODUCT SPEC 108-2012	SIZE A2	CAGE CODE 00779	DRAWING NO C=1217128
1 PLC ± -		APPLICATION SPEC 114-2046	SCALE 10:1	SHEET 1 of 1	REV C2
2 PLC ± 0.25[.010]		MATERIAL BRASS	RESTRICTED TO		
3 PLC ± -		FINISH TIN PLATE	-		
4 PLC ± -		CUSTOMER DRAWING			
ANGLES ± -					