

Voucher Redemption and Software License Key

Installation Guide

UG1042 (v1.0) February 12, 2014

Revision History

The following table shows the revision history for this document.

Date	Version	Revision
02/12/2014	1.0	Initial Xilinx release.

Table of Contents

Overview	4
Creating a License Key	4
Installing Your License Key File	11
Appendix A: Additional Resources and Legal Notices	
Xilinx Resources	13
Solution Centers	13
References	13
Please Read: Important Legal Notices	13

Voucher Redemption and Software License Key Installation

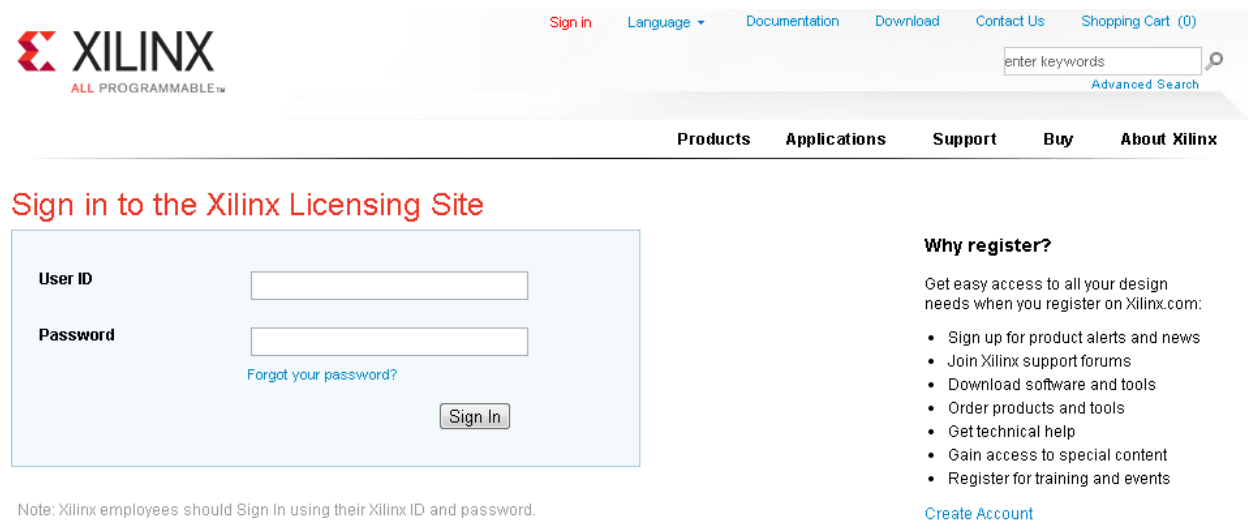
Overview

This guide shows how to redeem your product voucher and install your license key file.

Creating a License Key

1. Go to the [Xilinx Licensing Site](#) web page.

Note: You must first sign in. If you already have a Xilinx user account, enter your user ID and password, and then confirm that your contact information is current. If you do not have an account, click the **Create Account** button (see [Figure 1](#)).



The screenshot shows the Xilinx website header with the logo and navigation links: Sign In, Language, Documentation, Download, Contact Us, and Shopping Cart (0). Below the header is a search bar with the text "enter keywords" and an "Advanced Search" button. The main navigation menu includes Products, Applications, Support, Buy, and About Xilinx. The main content area is titled "Sign in to the Xilinx Licensing Site" and contains a sign-in form with fields for "User ID" and "Password", a "Forgot your password?" link, and a "Sign In" button. To the right of the form is a "Why register?" section with a list of benefits: "Get easy access to all your design needs when you register on Xilinx.com:", "Sign up for product alerts and news", "Join Xilinx support forums", "Download software and tools", "Order products and tools", "Get technical help", "Gain access to special content", and "Register for training and events". A "Create Account" link is located below the list.

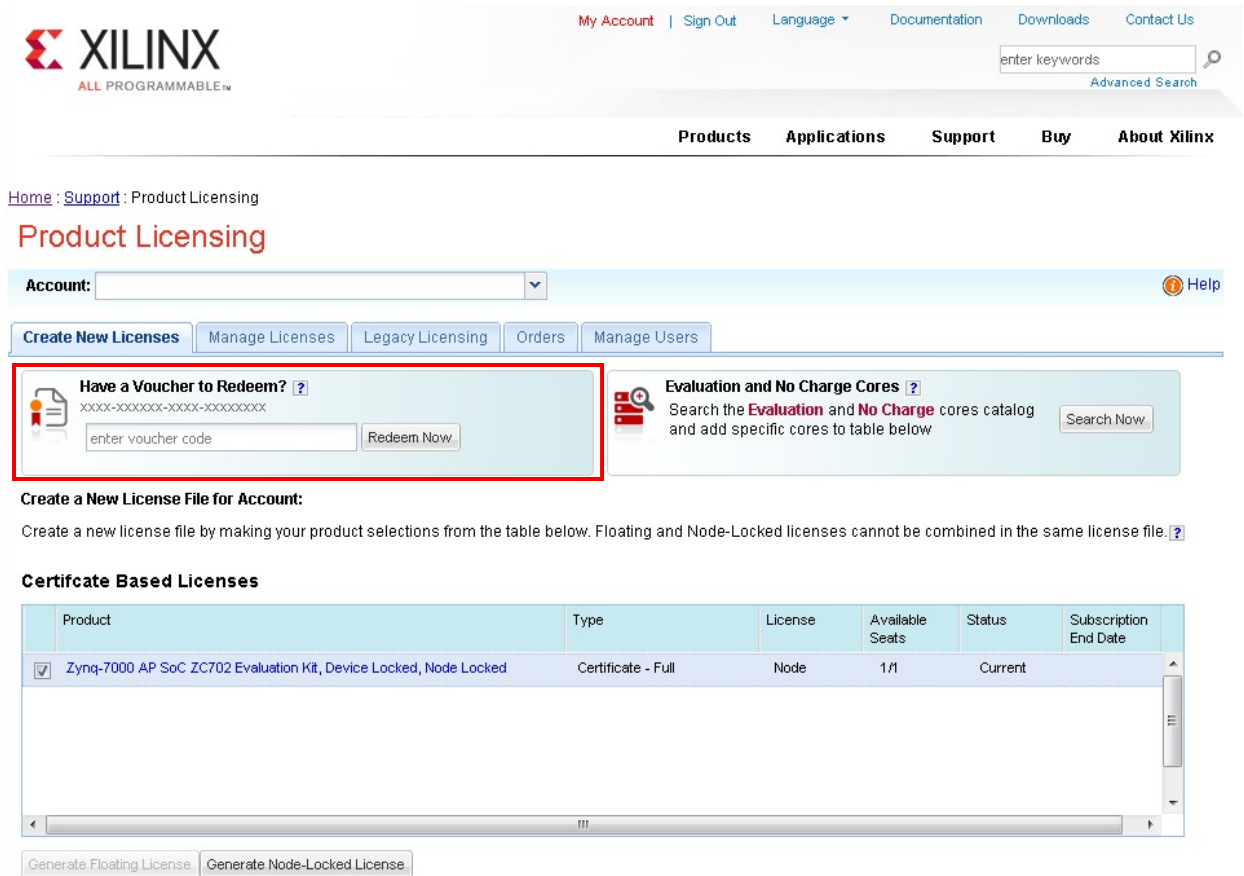
Note: Xilinx employees should Sign In using their Xilinx ID and password.

UG1042_01_010914

Figure 1: Xilinx Licensing Site

2. Enter your product voucher code (located on the back of the applicable quick start guide or on the voucher certificate), and click **Redeem Now** (see [Figure 2](#)).

Note: The license for the Zynq®-7000 AP SoC ZC702 Evaluation Kit is used as an example in the figures shown in this guide.



UG1042_02_010914

Figure 2: Xilinx Product Licensing Page

3. Click **YES** to confirm that you want to redeem the voucher.
4. Your product license appears under the **Certified Based Licenses** section as shown in [Figure 3](#). Verify that it is there and checked. Click **Generate Node-Locked License**. The

license generation form shown in [Figure 4](#) appears.

Certificate Based Licenses

Product	Type	License	Available Seats	Status	Subscription End Date
<input checked="" type="checkbox"/> Zynq-7000 AP SoC ZC702 Evaluation Kit, Device Locked, Node Locked	Certificate - Full	Node	1/1	Current	

UG1042_03_010914

Figure 3: License Verification

Note: A node-locked license allows for the use of a single seat of a product entitlement on a specific machine.

Generate Node License

*Fields marked with an asterisk * are required.*

1 PRODUCT SELECTION

Product Selections *	Product	Type	Available Seats	Subscription End Date	Requested Seats
<input checked="" type="checkbox"/>	Zynq-7000 AP SoC ZC702 Evaluati...	Full	1/1		1

2 SYSTEM INFORMATION

License	Node
Host ID * ?	Select a host... <input type="button" value="v"/>

3 COMMENTS

Comments ?	
----------------------------	--

UG1042_04_010914

Figure 4: License Generation

5. Click **Select a Host** drop down menu under **System Information** and select **Add a Host...** (see Figure 5). This brings up the Add a Host configuration window shown in Figure 6.

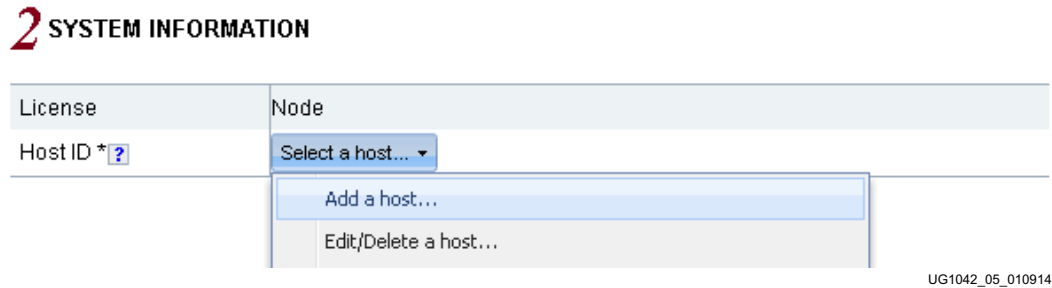


Figure 5: Host Selection

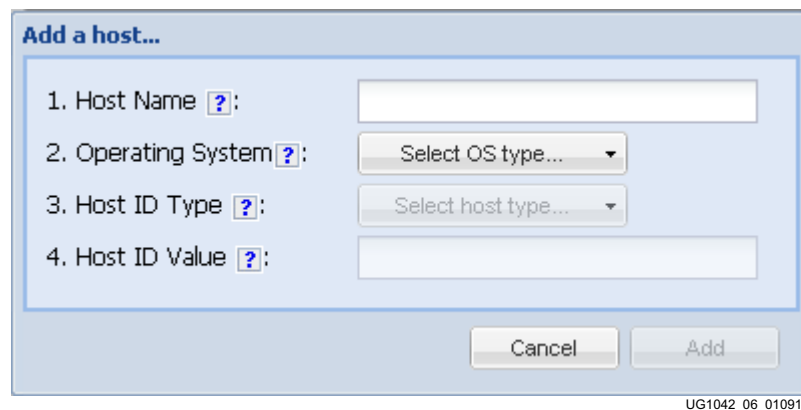


Figure 6: Host Configuration Selection

6. Enter system information:

Note: Windows is used in this demonstration.

- a. **Host Name:** This is the name of your machine. You can find this by going to **Start**, in the search bar enter **cmd** and press **Enter** key. Enter **ipconfig /all** and press **Enter** key. Look for the host name.

Note: Keep the CMD window open for [step c](#).

- b. **Operating System:** Select the operating system you are using. If unsure, you can find this by going to **Start**, in the search bar enter **system** and press **Enter** key, look for *system* under the control panel section.

- c. **Host ID Type:** Select **Ethernet Mac**.

Note: The host ID value uniquely identifies the machine to which your design tools or IP is licensed. You can choose a host ID type to be a MAC address, a hard drive serial number, a dongle ID, or a Solaris host ID. In this demonstration the Host ID Type selected is the MAC address; you can change this later depending on your needs.

- d. **Host ID Value:** Enter your MAC address. You can find this using the CMD window in the **Ethernet adapter Local Area Connection** under the **Physical Address** field.
7. Click **Next** under the **Comments** section (see [Figure 7](#)). This brings up the **Review License Request** window shown in [Figure 8](#).

3 COMMENTS

Comments ?	
------------	--

UG1042_07_010914

Figure 7: Comments Section

Generate Node License

4 REVIEW LICENSE REQUEST

Product Selections

Product	Subscription End Date	Available Seats	Requested Seats
Zynq-7000 AP SoC ZC702 Evaluation Kit, Device Loc...		1/1	1

System Information

License	Node
Host ID	

Note: WebTalk is always enabled for WebPACK users. WebTalk ignores user and install preference bitstream is generated using the WebPACK license. If a design is using a device contained in a WebPACK license is available, the WebPACK license will always be used. To get additional information in WebTalk, go to www.xilinx.com/ise/webtalk.

UG1042 OR 010014

Figure 8: License Request Review

- Click **Next** (see Figure 8).
- You will also receive license generation confirmation by e-mail. This message contains the generated license key file as an attachment. If you do not receive your license by mail, you can download it directly from the Xilinx Licensing Site. See the Managing Licence Key files section in Chapter 5 of the Vivado Design Suite User Guide (UG973) [Ref 2].

Installing Your License Key File

1. Save the license file attached to the e-mail you received after you created your license key to your local drive.
2. Run the Xilinx License Configuration Manager:

For Windows: Select **Start** → **All Programs** → **Xilinx Design Tools** → **Vivado 201x.x** → **Accessories** → **Manage Xilinx Licenses**. (See [Figure 9](#)).

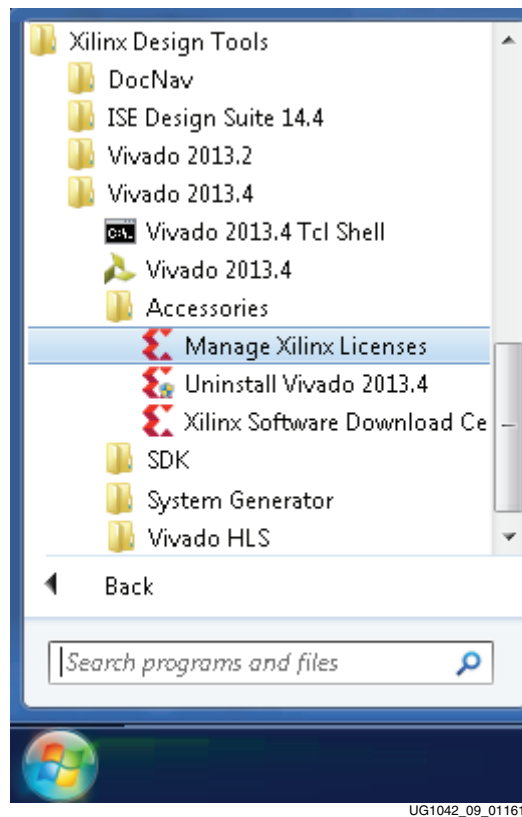
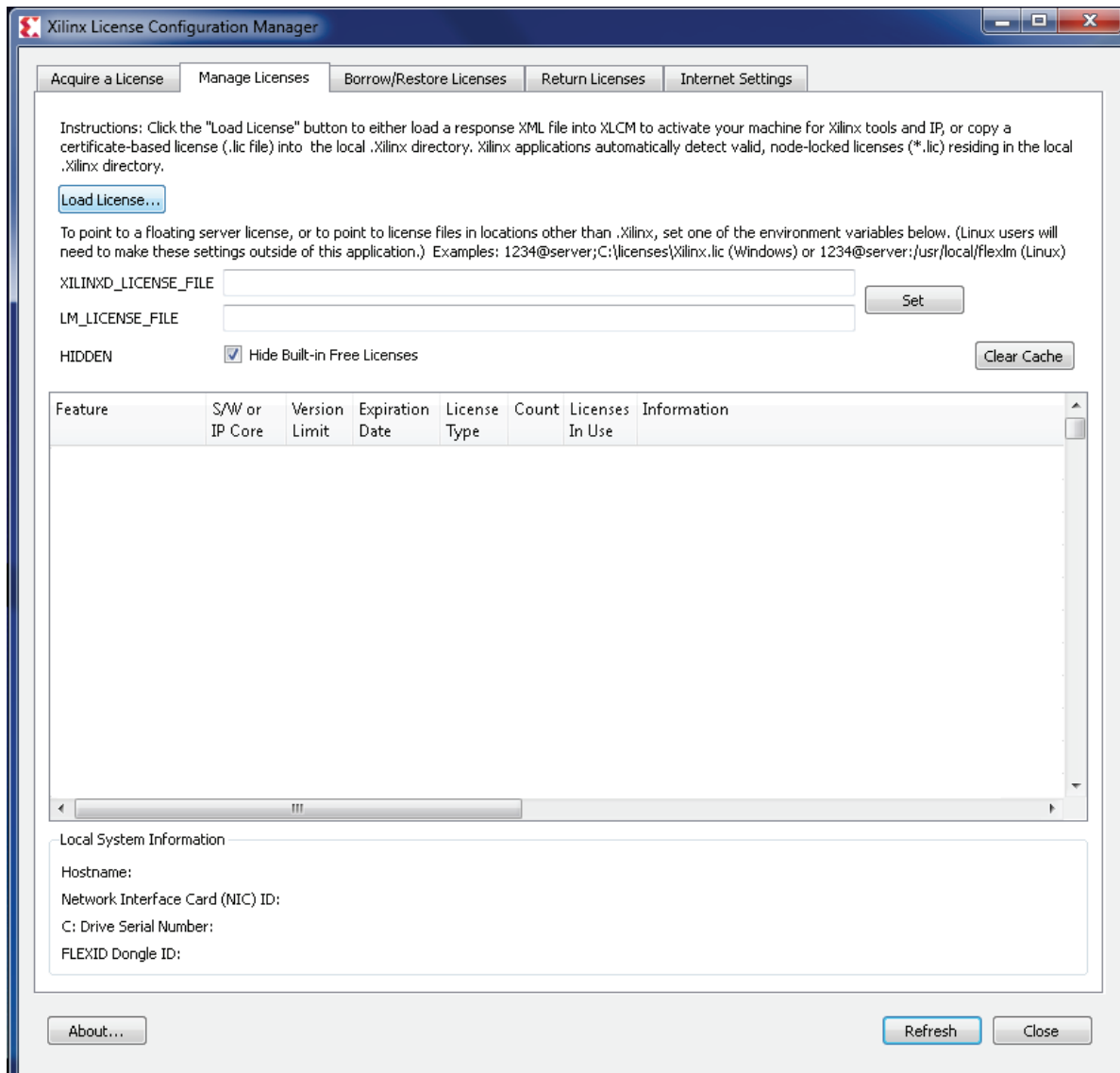


Figure 9: Manage Xilinx License Selection

3. Click **Load License** in the Manage Licenses tab (See [Figure 9](#)).



UG1042_10_011614

Figure 10: Manage Licenses Tab

4. Browse to your license file (`xilinx.lic`) that you saved and click **Open**.
5. This copies the license file to the `C:\.Xilinx` (Windows) or `<Home>/.Xilinx` directory of your computer where it is located automatically by the Xilinx tools.
6. When the Copy License operation is complete, the table on the Manage Xilinx Licenses tab is updated with licensing information from the license file.
7. Click **Close** to exit the Xilinx License Configuration Manager.

Additional Resources and Legal Notices

Xilinx Resources

For support resources such as Answers, Documentation, Downloads, and Forums, see [Xilinx Support](#).

For a glossary of technical terms used in Xilinx documentation, see the [Xilinx Glossary](#).

Solution Centers

See the [Xilinx Solution Centers](#) for support on devices, software tools, and intellectual property at all stages of the design cycle. Topics include design assistance, advisories, and troubleshooting tips.

References

These Xilinx documents provide supplemental material useful with this guide:

1. See the appropriate quick start guide for your Xilinx product.
 2. *Vivado Design Suite User Guide: Release Notes, Installation, and Licensing* ([UG973](#)).
-

Please Read: Important Legal Notices

The information disclosed to you hereunder (the "Materials") is provided solely for the selection and use of Xilinx products. To the maximum extent permitted by applicable law: (1) Materials are made available "AS IS" and with all faults, Xilinx hereby DISCLAIMS ALL WARRANTIES AND CONDITIONS, EXPRESS, IMPLIED, OR STATUTORY, INCLUDING BUT NOT LIMITED TO WARRANTIES OF MERCHANTABILITY, NON-INFRINGEMENT, OR FITNESS FOR ANY PARTICULAR PURPOSE; and (2) Xilinx shall not be liable (whether in contract or tort, including negligence, or under any other theory of liability) for any loss or damage of any kind or nature related to, arising under, or in connection with, the Materials (including your use of the Materials), including for any direct, indirect, special, incidental, or consequential loss or damage (including loss of data, profits, goodwill, or any type of loss or damage suffered as a result of any action brought by a third party) even if such damage or loss was reasonably foreseeable or Xilinx had been advised of the possibility of the same. Xilinx assumes no obligation to correct any errors contained in the Materials or to notify you of updates to the Materials or to product specifications. You may not reproduce, modify, distribute, or publicly display the Materials without prior written consent. Certain products are subject to the terms and conditions of Xilinx's limited warranty,

please refer to Xilinx's Terms of Sale which can be viewed at <http://www.xilinx.com/legal.htm#tos>; IP cores may be subject to warranty and support terms contained in a license issued to you by Xilinx. Xilinx products are not designed or intended to be fail-safe or for use in any application requiring fail-safe performance; you assume sole risk and liability for use of Xilinx products in such critical applications, please refer to Xilinx's Terms of Sale which can be viewed at <http://www.xilinx.com/legal.htm#tos>.

Automotive Applications Disclaimer

XILINX PRODUCTS ARE NOT DESIGNED OR INTENDED TO BE FAIL-SAFE, OR FOR USE IN ANY APPLICATION REQUIRING FAIL-SAFE PERFORMANCE, SUCH AS APPLICATIONS RELATED TO: (I) THE DEPLOYMENT OF AIRBAGS, (II) CONTROL OF A VEHICLE, UNLESS THERE IS A FAIL-SAFE OR REDUNDANCY FEATURE (WHICH DOES NOT INCLUDE USE OF SOFTWARE IN THE XILINX DEVICE TO IMPLEMENT THE REDUNDANCY) AND A WARNING SIGNAL UPON FAILURE TO THE OPERATOR, OR (III) USES THAT COULD LEAD TO DEATH OR PERSONAL INJURY. CUSTOMER ASSUMES THE SOLE RISK AND LIABILITY OF ANY USE OF XILINX PRODUCTS IN SUCH APPLICATIONS.

© Copyright 2014 Xilinx, Inc. Xilinx, the Xilinx logo, Artix, ISE, Kintex, Spartan, Virtex, Vivado, Zynq, and other designated brands included herein are trademarks of Xilinx in the United States and other countries. All other trademarks are the property of their respective owners.