

DATA DISPLAY PRODUCTS (DDP) PROPRIETARY INFORMATION. DO NOT REPRODUCE, COPY, OR USE WITHOUT EXPRESS WRITTEN PERMISSION. COPYRIGHT DATA DISPLAY PRODUCTS.

REV.	DATE	BY	DESCRIPTION	503265
A	011212	LC	INITIAL RELEASE	

ELECTRO-OPTICAL CHARACTERISTICS @ T_a = 25°C

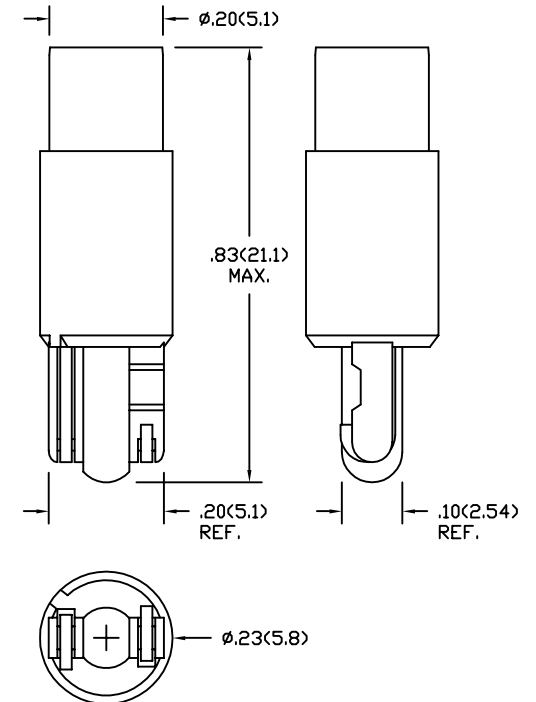
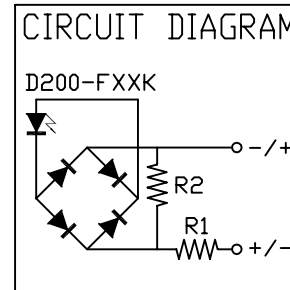
SYM	PARAMETER	X = LED COLOR						UNIT
		RED	ORANGE	AMBER	GREEN	BLUE	WHITE	
I _v	TYP. LUMINOUS INTENSITY @ I _f =20mA	300	450	325	300	125	270	mcd
V _o	OPERATING VOLTAGE	6	6	6	6	6	6	V
I _f	TYP. FORWARD CURRENT @ V _f =6V	23~30			8~13			mA
I _{mx}	MAX. FORWARD CURRENT @ V _f =7V	40	40	40	20	20	20	mA
V _{br}	REVERSE BREAKDOWN @ I _r =100uA	-	-	-	-	-	-	V
λ _{pk}	PEAK WAVELENGTH	635	609	592	520	465	-	nm
λ _D	DOMINANT WAVELENGTH	626	605	590	525	470	-	nm

ABSOLUTE MAX. RATING T_a=25°C

PARAMETER	VALUE		UNIT
	R, O & A	G, B & W	
POWER DISSIPATION	280	140	mW
DERATE/°C >T _a	4.2	2.1	mW
OPERATING VOLTAGE	7	7	V
OPERATING TEMPERATURE	-40<+100	-30<+85	°C
STORAGE TEMPERATURE	-40<+120	-40<+100	°C

REMARKS:

- Dimensions are in inches(mm).
- LED encapsulation is water-clear.
- This device is immune to peak noise current of 3mA.
- Caution: GaInN LEDs are class 1 ESD sensitive (MIL-STD-1686). Exceeding absolute maximum ratings may cause damage to, or possibly result in catastrophic failure of these devices. Use appropriate ESD precautions during handling and operation.
- For 200-FW4K LED chromaticity coordinate range, see drawing #502590.



DDP Data Display Products			
445 S. DOUGLAS ST., EL SEGUNDO, CA. 90245 (310)640-0442 FAX: (310)640-7639			
DATE: 011212	DWN BY: LC	CHK'D BY:	APPRV'D BY:
LAST REV. DATE: -	REV LEVEL A	MATERIAL: -	
TITLE 86LS-X1			
SCALE: NONE	TOL: ± .025(.63)	.XX(.X) .XXX(.XX) .010(.25)	ANG. DWG NUMBER: - 503265