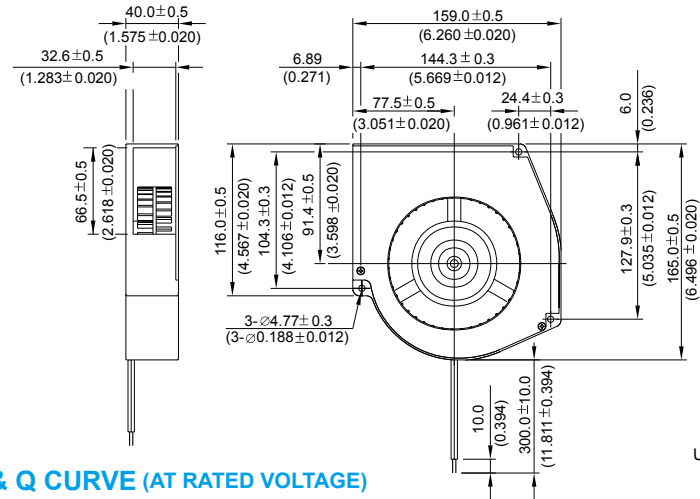
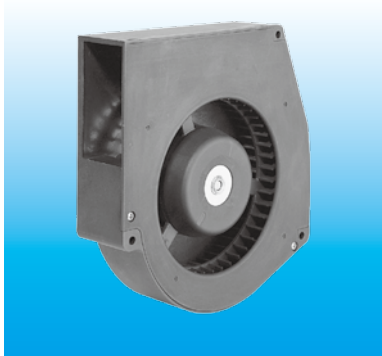


BFB 159 x 165 x 40 MM SERIES

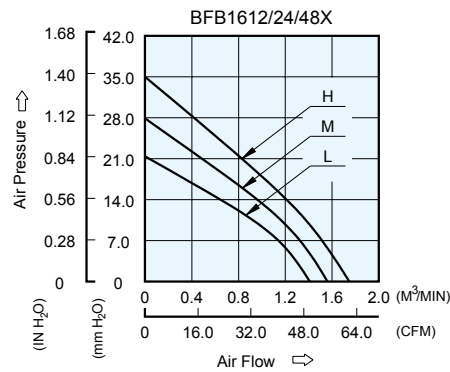
DIMENSIONS DRAWING



UNIT : $\frac{\text{mm}}{\text{(INCH)}}$

- * Bearing Type
Ball Bearings
- * Material
Impeller & Frame : Plastic (UL 94V-0)
- * Lead Wires :
UL 1007 AWG #24 OR Equivalent
Red Wire Positive(+)
Black Wire Negative(-)
- * Weight : 588g (20.74 oz)

P & Q CURVE (AT RATED VOLTAGE)



| MODEL | | Rated Voltage | Operating Voltage Range | Input Current | Input Power | Speed | Maximum Air Flow | | Maximum Air Pressure | | Noise |
|----------|-------------|---------------|-------------------------|---------------|-------------|--------|---------------------|-------|----------------------|---------------------|-------|
| PART NO. | FUNCTION | VDC | VDC | Amp | Watt | R.P.M. | m ³ /min | CFM | mmH ₂ O | IN H ₂ O | dB-A |
| BFB1612L | -R00 / -F00 | 12 | 7.0 to 13.2 | 0.80 | 9.60 | 1800 | 1.410 | 49.79 | 21.50 | 0.846 | 51.5 |
| BFB1624L | -R00 / -F00 | 24 | 14.0 to 26.4 | 0.40 | 9.60 | | | | | | |
| BFB1648L | -R00 / -F00 | 48 | 28.0 to 56.0 | 0.22 | 10.56 | | | | | | |
| BFB1612M | -R00 / -F00 | 12 | 7.0 to 13.2 | 1.10 | 13.20 | 2000 | 1.560 | 55.09 | 28.00 | 1.102 | 54.5 |
| BFB1624M | -R00 / -F00 | 24 | 14.0 to 26.4 | 0.56 | 13.44 | | | | | | |
| BFB1648M | -R00 / -F00 | 48 | 28.0 to 56.0 | 0.28 | 13.44 | | | | | | |
| BFB1612H | -R00 / -F00 | 12 | 7.0 to 13.2 | 1.43 | 17.16 | 2200 | 1.750 | 61.80 | 35.00 | 1.378 | 56.5 |
| BFB1624H | -R00 / -F00 | 24 | 14.0 to 26.4 | 0.74 | 17.16 | | | | | | |

* Function type is optional.
 * The max. air flow and the speed are measured in free air ; max. air pressure is measured at zero air flow.
 * Noise is measured in anechoic chamber in free air, one meter from intake side.
 * All readings are typical values at rated voltage.
 * Specifications are subject to change without notice.