

NOTES:

1.0 ELECTRICAL SPECIFICATIONS:

- 1.1 FREQUENCY RANGE: 1.0 - 2.0 GHz
- 1.2 INSERTION LOSS: 0.4dB MAX.
- 1.3 ISOLATION: 20dB MIN.
- 1.4 VSWR (MAX): 1.25:1 MAX.
- 1.5 OUTPUT UNBALANCE:
 - 1.5.1 AMPLITUDE: 0.2dB
 - 1.5.2 PHASE: 2° MAX.
- 1.6 MAXIMUM INPUT POWER: 3 WATTS MAX.

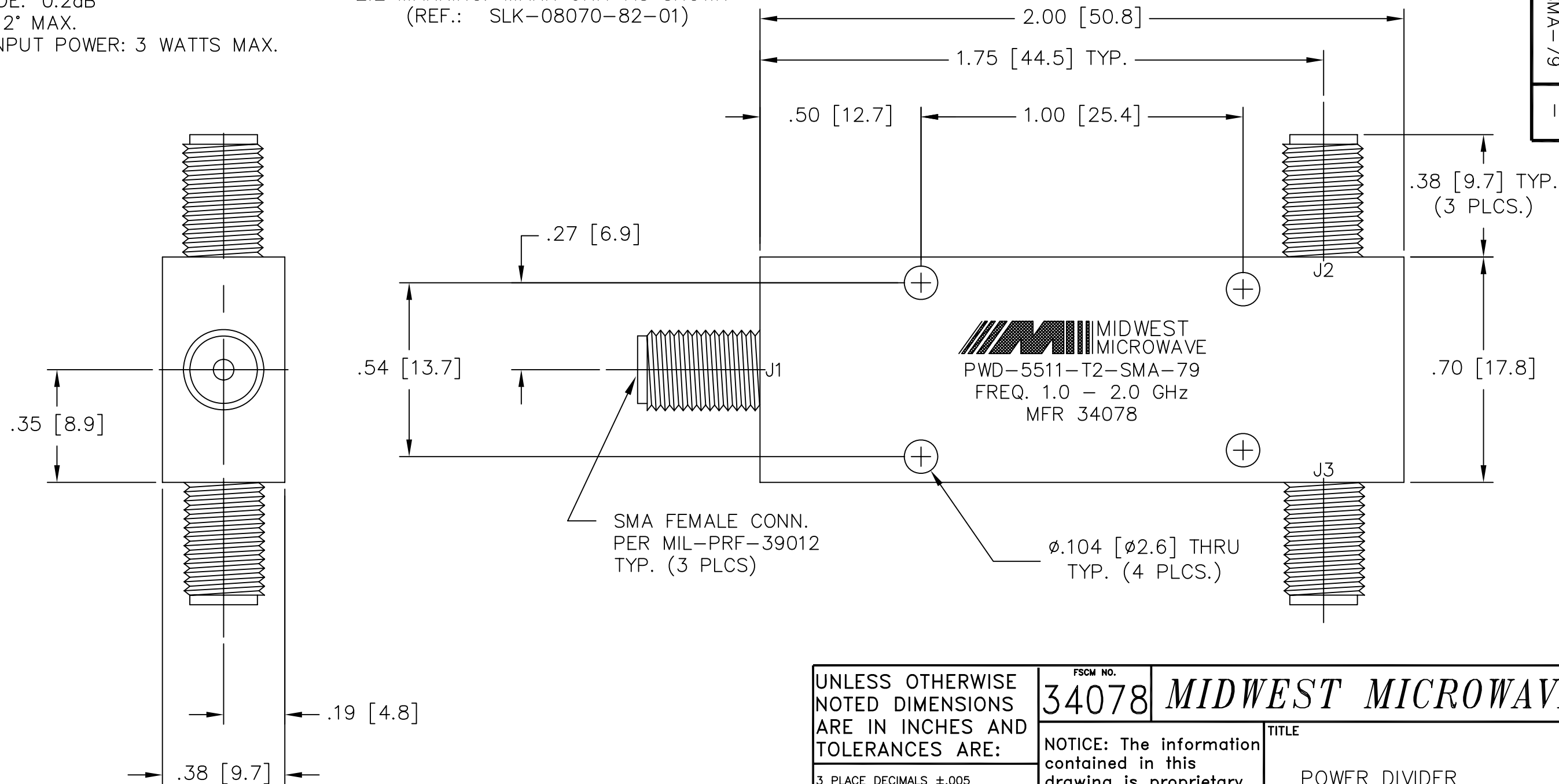
2.0 FINISH:

- 2.1 GREY PER MIL-E-15090 TYPE II, CLASS 2 OVER MIL-C-5541 CLASS 3A MEETS MIL-F-14072 MEETS MIL-E-5400
- 2.2 MARKING: MARK UNIT AS SHOWN (REF.: SLK-08070-82-01)

3.0 DIMENSIONS IN PARENTHESIS ARE IN MILLIMETERS.

4.0 WEIGHT: 60 GRAMS MAX.

MODEL NUMBER
PWD-5511-T2-SMA-79
REV.
-



SMA FEMALE CONN.
PER MIL-PRF-39012
TYP. (3 PLCS)

ø.104 [ø2.6] THRU
TYP. (4 PLCS.)

UNLESS OTHERWISE NOTED DIMENSIONS ARE IN INCHES AND TOLERANCES ARE:

- 3 PLACE DECIMALS ±.005
- 2 PLACE DECIMALS ±.02
- FRACTIONS ±1/64
- PARALLELITY: T.I.R. _____
- FLATNESS: T.I.R. _____
- CONCENTRICITY: T.I.R. _____
- ANGLES AND PERPENDICULARITY: ±1°

FSCM NO.
34078

MIDWEST MICROWAVE

NOTICE: The information contained in this drawing is proprietary and must not be used without the permission of Midwest Microwave

TITLE
POWER DIVIDER

DRAWN/DATE
L.BROWN
9/26/97

ENG./DATE
P.GOODMAN
5/12/05

DRAWING NUMBER
PWD-5511-T2-SMA-79

CHECKED/DATE
S.ORLOV
5/12/05

APPROVED/DATE

SCALE: 3=1 SHEET 1 of 1

DATE	5/12/05
DESCRIPTION	RELEASED
REV.	-